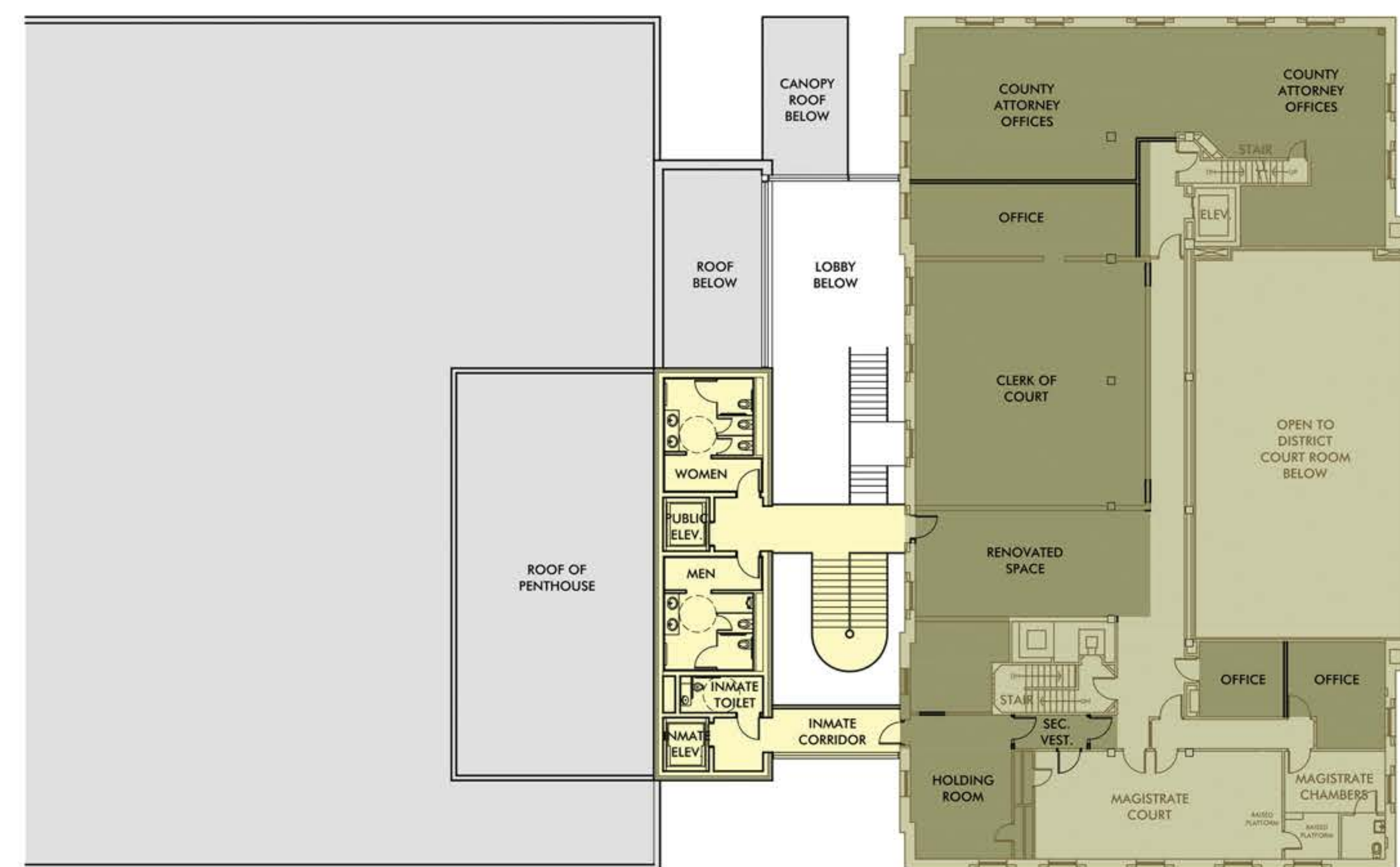
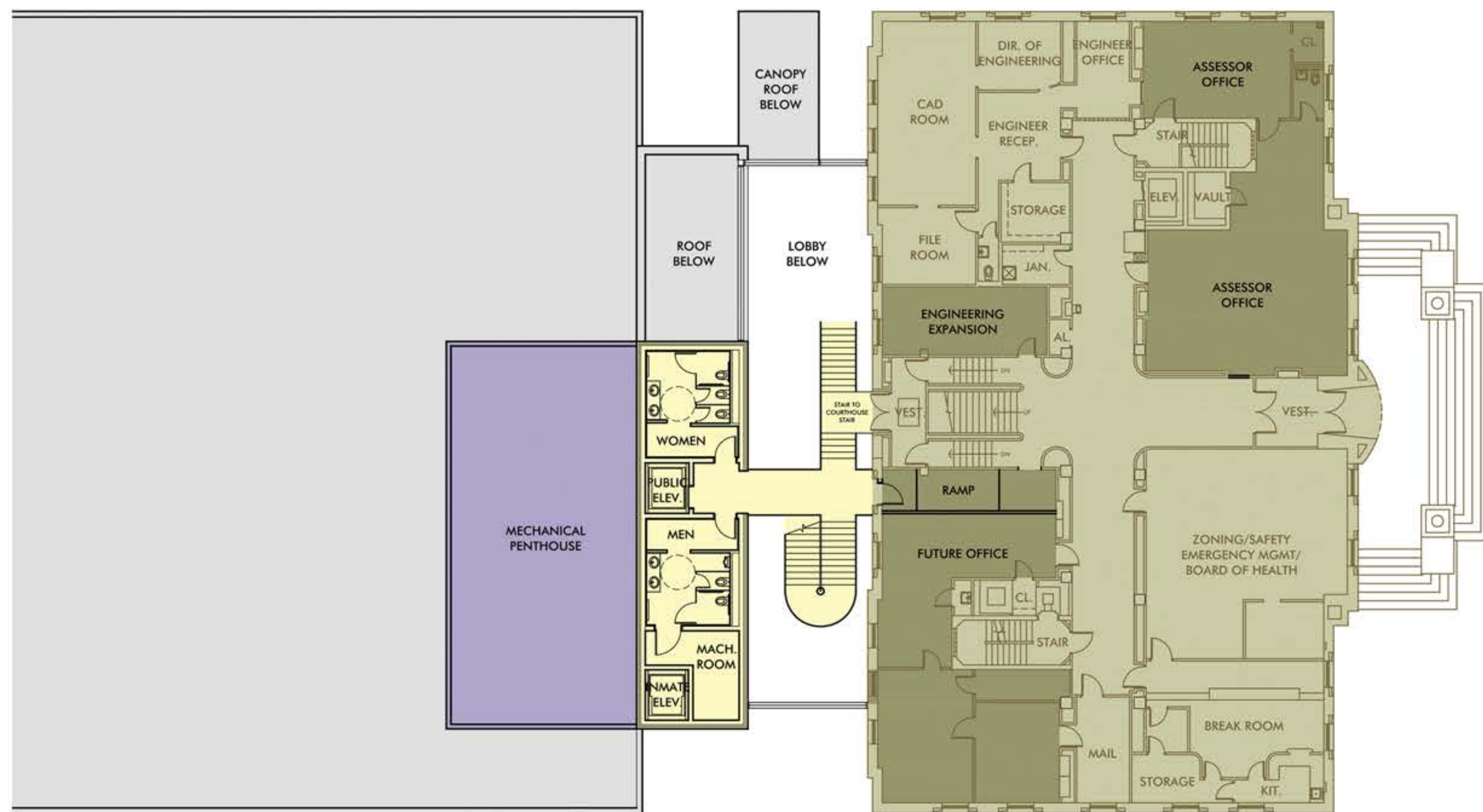


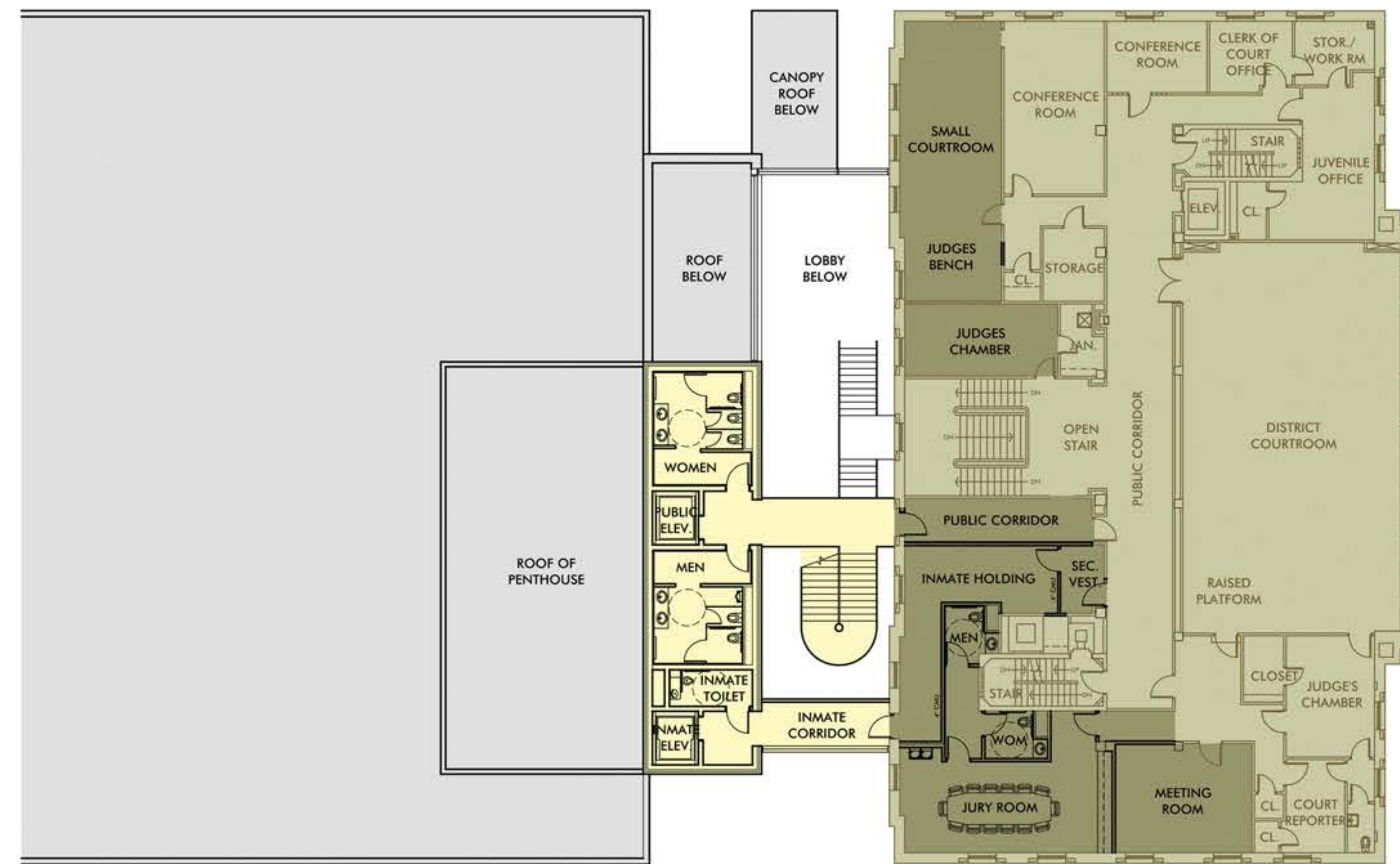
SECOND FLOOR
 ELEV. = 120'-6" (13'-6" FLR TO FLR)



FOURTH FLOOR
 ELEV. = 145'-0" (14'-10" FLR TO FLR)



FIRST FLOOR
 ELEV. = 109'-6" (11'-0" FLR TO FLR)



THIRD FLOOR
 ELEV. = 134'-0" (11'-0" FLR TO FLR)

OPTION 1B COURTHOUSE FLOOR PLAN FEATURES:

- PRESERVES FACADES OF HISTORIC COURTHOUSE
- LOBBY WILL BE CONSTRUCTED AS MULTI-STORY ATRIUM
- PROVIDES ADA COMPLIANT ELEVATOR FOR PUBLIC USE
- PROVIDES ADA ACCESSIBLE TOILETS FOR ALL FLOORS
- LOW CEILING CLEARANCE OF GROUND FLOOR IS ADDRESSED
- NEW LOBBY STAIR HAS LANDING TO JOIN CENTRAL COURTHOUSE STAIR
- PRESERVES ALL EXISTING STAIRS IN HISTORIC COURTHOUSE
- INSTALL ENERGY EFFICIENT WINDOWS RESEMBLING 1941 COURTHOUSE
- SOME DEPARTMENTS ARE RELOCATED TO ALLOW CORRIDORS TO ADDITION
- 4TH FLOOR IS NOW AVAILABLE FOR OFFICE RELOCATION AND GROWTH
- MAGISTRATE & DISTRICT COURTS REMAIN IN CURRENT LOCATIONS
- JURY ROOM IS EXPANDED & NEW JURY TOILETS ARE ADA ACCESSIBLE
- A MEETING ROOM REPLACES THE LAW LIBRARY SPACE
- THE SMALL COURTROOM IS SHOWN RELOCATED ON THE 3RD FLOOR
- PROVIDES SECURE PATH FOR INMATES TO REACH COURTROOM FLOORS
- PROVIDES INMATE HOLDING ROOMS NEXT TO COURTROOMS
- INMATE TOILETS ARE PROVIDED NEAR COURTROOM HOLDING AREAS
- NEW MECHANICAL PENTHOUSE ON ROOF WILL SERVE BOTH BUILDINGS
- EXISTING FLOOR-TO-FLOOR HEIGHTS ARE PROVIDED ON DRAWINGS
- PLANS AS SHOWN ARE CONCEPTUAL AND WILL CONTINUE TO EVOLVE